

Digital Transformation in the ARMPI

From the chopping block to the blockchain

?

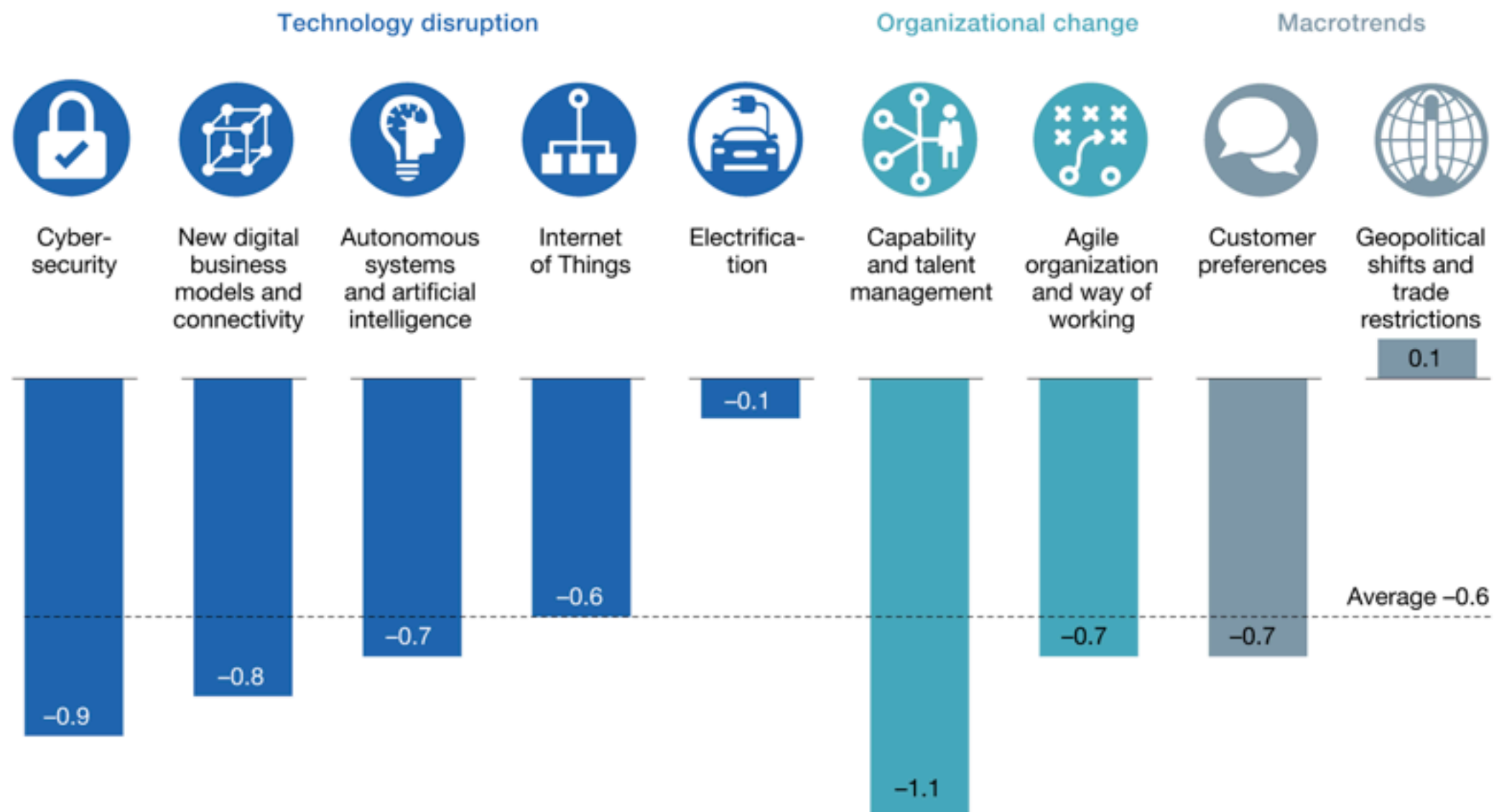




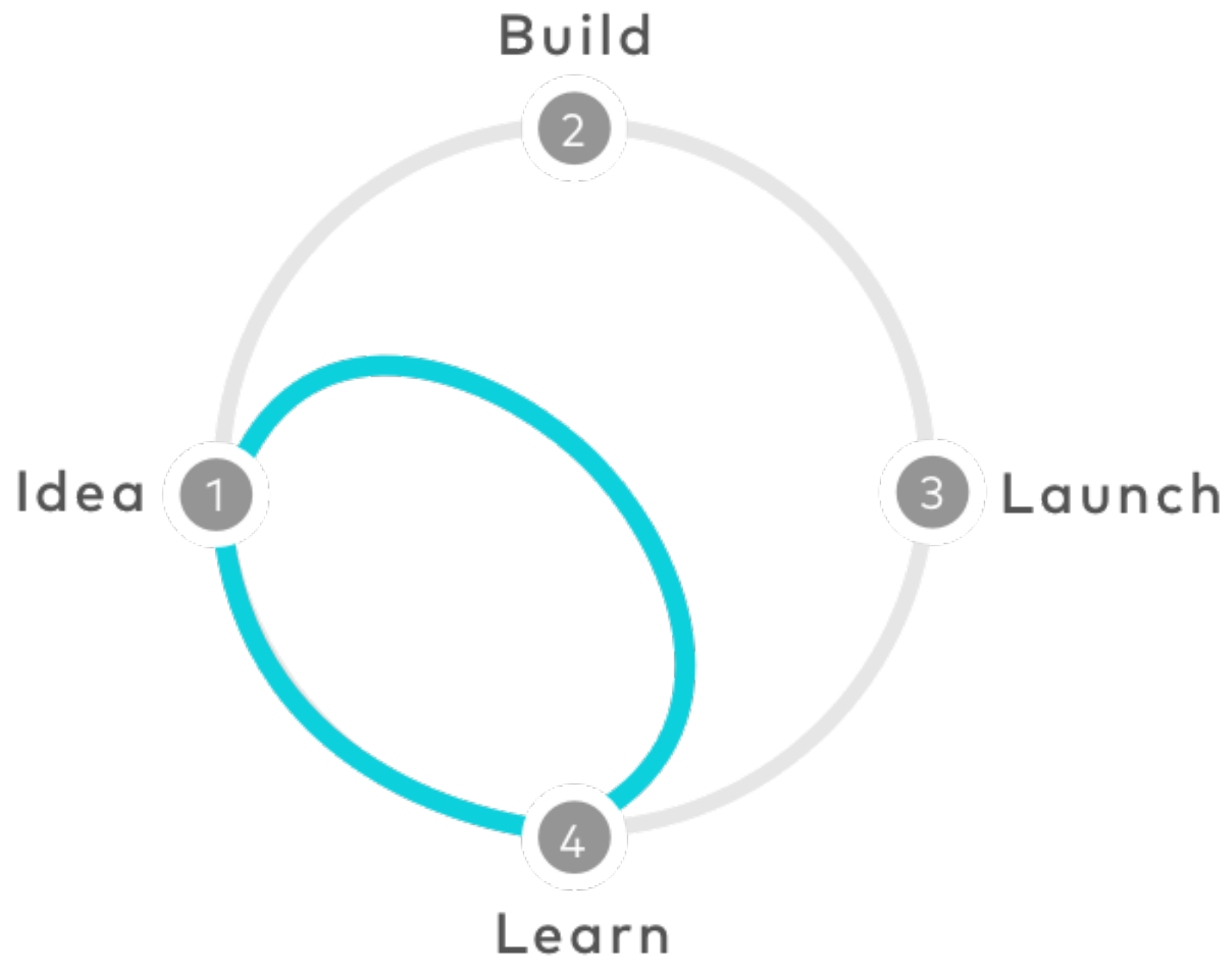
Exhibit 1

Executives recognize the impact of the disruptive forces but report limited measures to ready their companies for change.

Analysis of gap, for each disruptive force, between respondents' expected business impact¹ and company readiness,²
negative values indicate expected impact exceeds company readiness



Democratising Tech





Democratizing AI

- Computing
- Data
- Algorithms
- Talent



Two flavors of machine learning



Pre-Trained
Models



Build Your Own
Model



Discovering and enacting
the path to safe artificial
general intelligence.

RESEARCH SYSTEMS

Retro
Contest

NO. 12
APR 6
2018



VIEW RESEARCH >



Can we?

Do we want to be?

**Lights...Camera...
Disruption!**

Can we afford not to
be?

2018 Game Changer categories

Neurotechnology

Visualizing, improving, and repairing brain functionality

Regenerative Medicine

3D printing and engineering organs, cells, and tissues

Synthetic Animal Products

Startups offering lab-grown animal products from food to clothing

Synthetic Agriculture

Advanced technologies for improving plant health and crop yield

AI Chips

Startups developing processing units for AI applications

Massive Simulations

The creation of simulated worlds for predicting real-world outcomes

Intelligent Public Safety

The future of surveillance, crime prevention, and emergency response

Autonomous Construction

Robotics and automation equipment for the construction industry

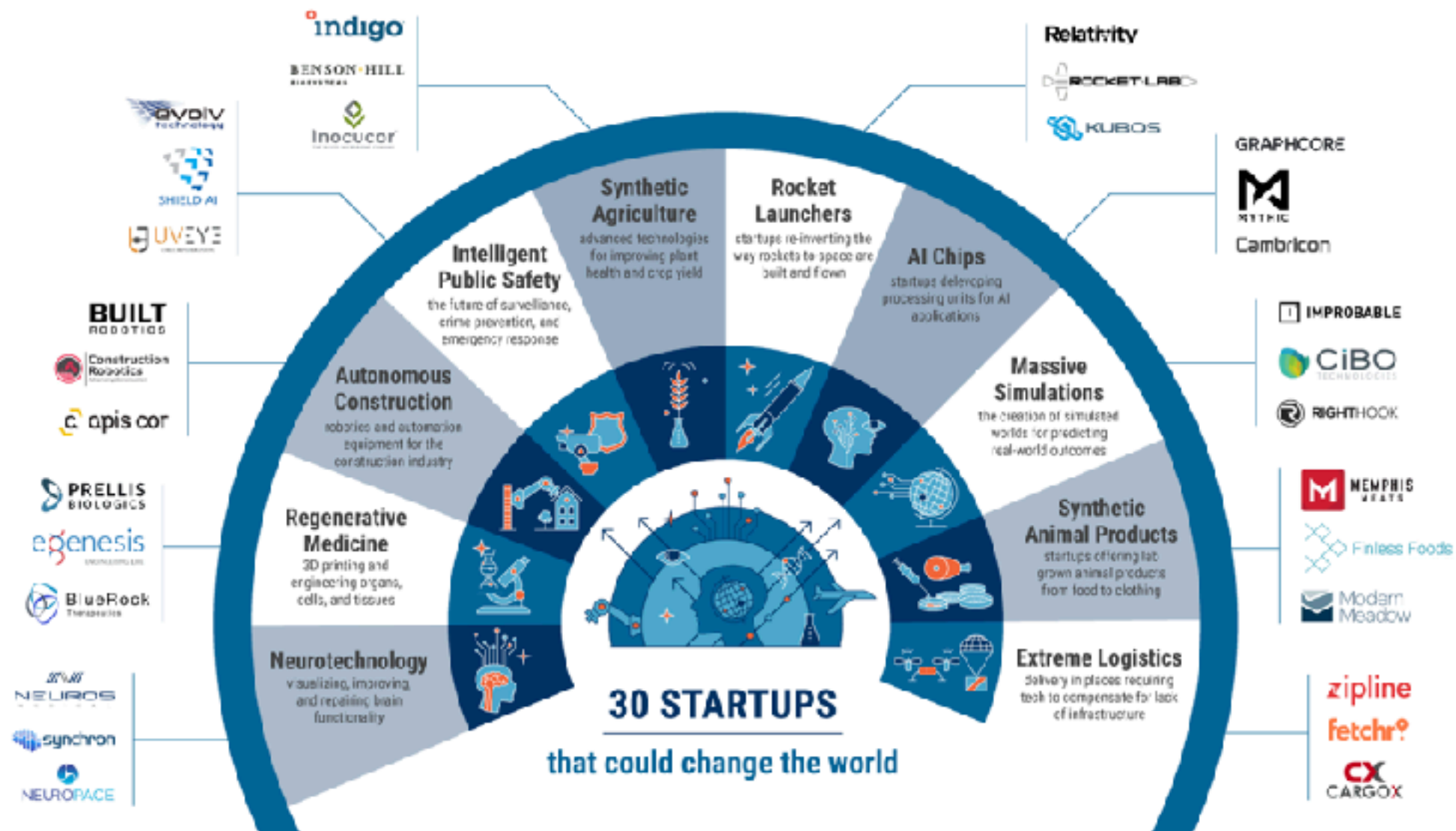
Rocket Launchers

Startups re-inventing the way rockets-to-space are built and flown

Extreme Logistics

Delivery in places requiring tech to compensate for lack of infrastructure

CBINSIGHTS GAME CHANGERS 2018

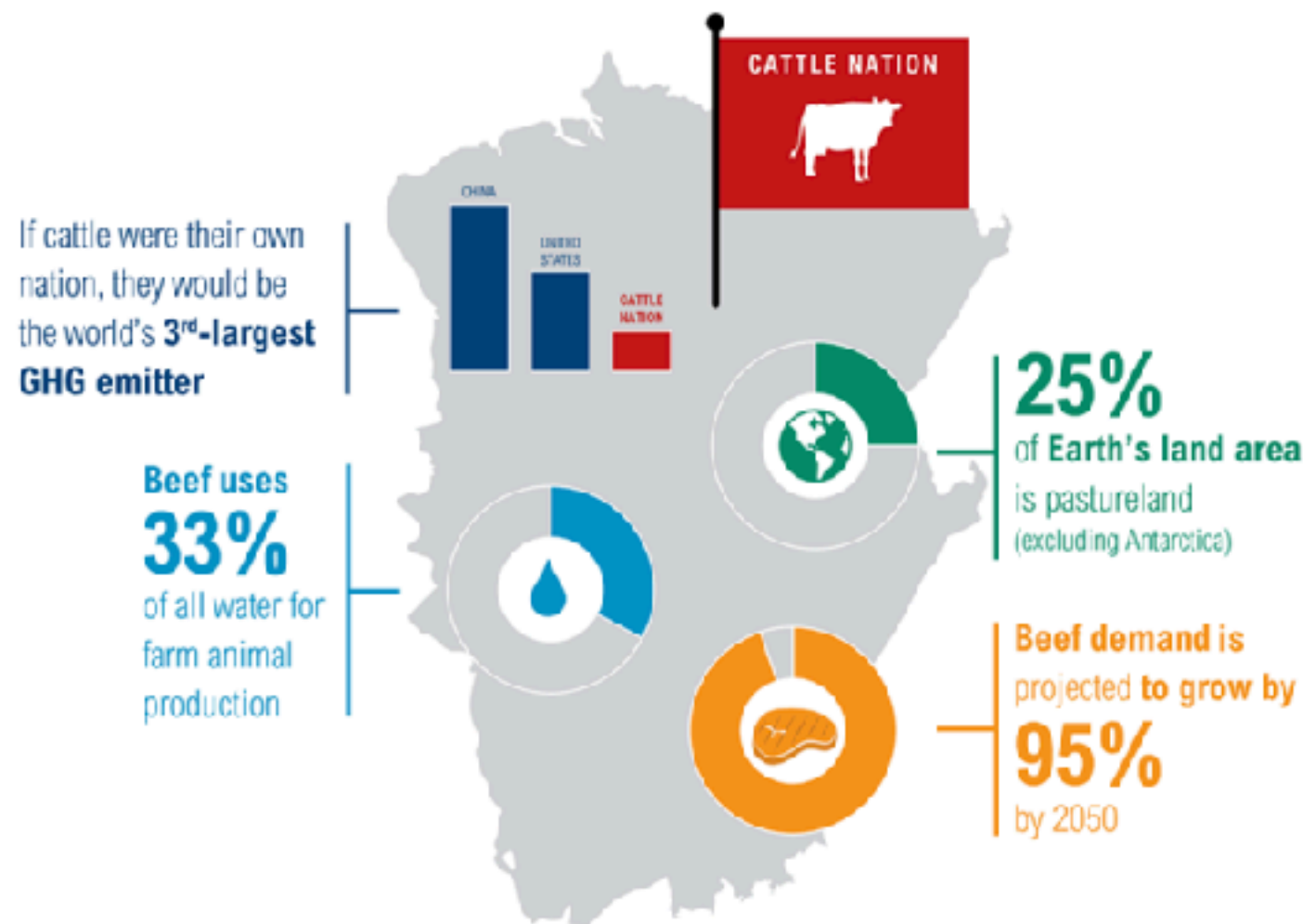


A photograph of two cows in a grassy field with mountains in the background, overlaid with a dark blue gradient. The cows are in the foreground, one slightly behind the other, both looking towards the camera. The background shows rolling hills and mountains under a clear sky.

Synthetic Animal Products

Startups offering lab-grown animal products, from food to clothing

Current livestock production is unsustainable



FOOD	IMPACT (GHG emissions per gram of protein)	COST (Retail price per gram of protein)
Wheat	<div></div>	\$
Corn	<div></div>	\$
Beans, chickpeas, lentils	<div></div>	\$
Rice	<div></div>	\$
Fish	<div></div>	\$\$\$
Soy	<div></div>	\$
Nuts	<div></div>	\$\$\$
Eggs	<div></div>	\$\$
Poultry	<div></div>	\$\$
Pork	<div></div>	\$\$
Dairy (milk, cheese)	<div></div>	\$\$
Beef	<div></div>	\$\$\$
Lamb & goat	<div></div>	\$\$\$

REPLACE TRADITIONAL MEAT

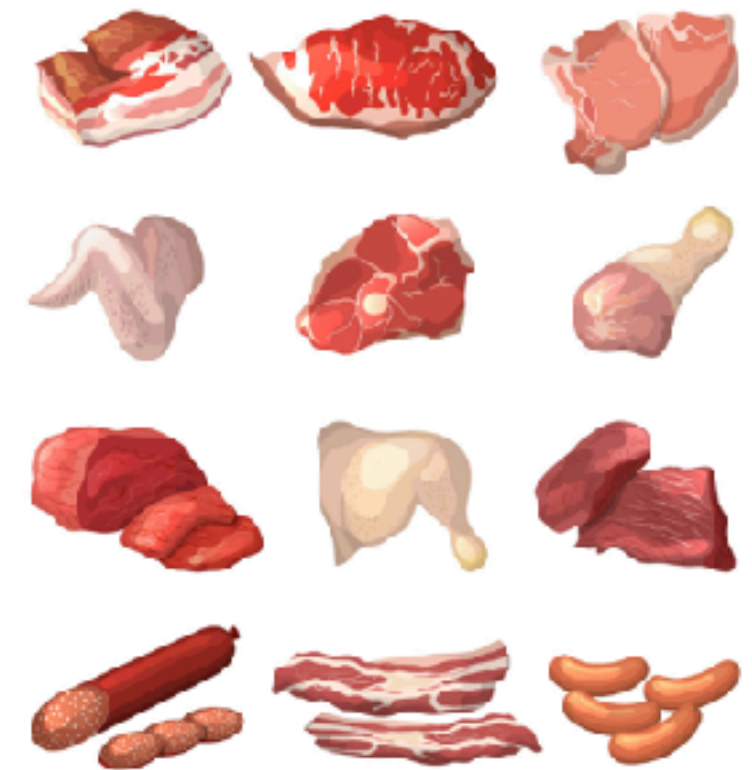


MEMPHIS
MEATS

Memphis Meats develops technology to engineer real meat without animals, by farming animal stem cells in a lab without the need to feed, breed, and slaughter livestock.

The company claims its technology requires up to 90% less greenhouse gas emissions, land, and water than conventionally produced meat. Scaling up for mass production, Memphis Meats hopes its products will replace traditional meat altogether.

Select Investors: Bill Gates, Cargill, Richard Branson, Kimbal Musk, Draper Fisher Jurveston



LAB-GROWN MEAT



MEMPHIS
MEATS

Funding:
\$19.9M

Memphis Meats is producing animal cells in the lab to create meat without the animal. In 2016, it unveiled a lab-cultured meatball that cost \$18K per pound to grow. In 2017, it released samples of lab-grown chicken and duck meat, with the cost per pound reduced to \$9K. As prices fall, it hopes to launch commercially in 2021.



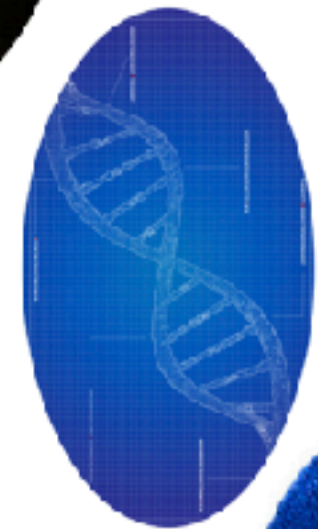
PRODUCE CULTURED LEATHER



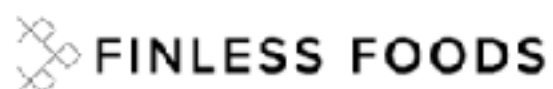
Modern Meadow applies advances in tissue engineering to produce cultured leather that requires no animal slaughter and much lower inputs of land, water, energy and chemicals than conventional methods.

The process is called biofabrication. Starting with living cells, Modern Meadow can grow collagen, the same natural protein found in animal skin, assemble it into a sheet of synthetic leather, and then finish the aesthetics with a tanning process.

Select Investors: Sequoia Capital, ICONIQ Capital, Ternasek Holdings, Tony Fadell



HARVEST FISH STEM CELLS



Finless Foods is an early-stage biotechnology company that harvests fish stem cells from living fish to produce lab-grown fish meat for human consumption.

The company's goal is to make seafood more sustainable and healthier compared to today's conventionally caught and commercially farmed seafood.

Select Investors: IndieBio, SOSV



Future-proofing: Cargill invests in meat, biotech, and plant protein



MEMPHIS
MEATS



Lab-grown meat: Cargill backed Memphis Meats in Aug'17.



Blockchain: Cargill launched a blockchain platform to trace turkey meat.



Descartes
LABS



Long-term planning: Cargill invested in Descartes Labs, which uses drones and AI to monitor global agriculture.



Plant protein: In Jan'18 Cargill entered a joint venture with PURIS, a large pea protein producer.



BRINGING IN THE REGULATORS

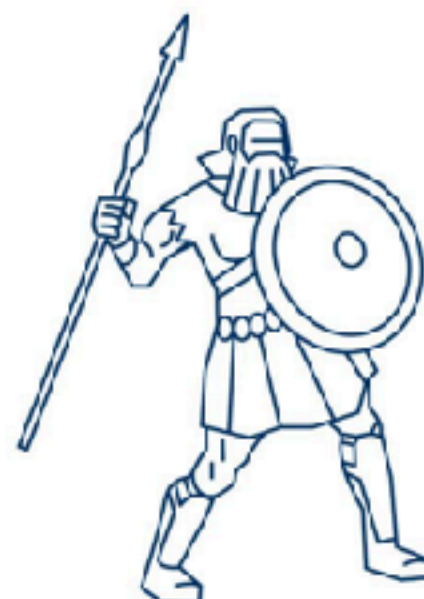
Some meat producers see a growing threat

The US Cattlemen's Association recently petitioned the government to exclude plant-based and lab-grown products from the definition of meat.



web: www.uscattlemen.org – email: usca@uscattlemen.org
653 Constitution Ave., NE, Washington, DC 20002 – (202) 870-3867

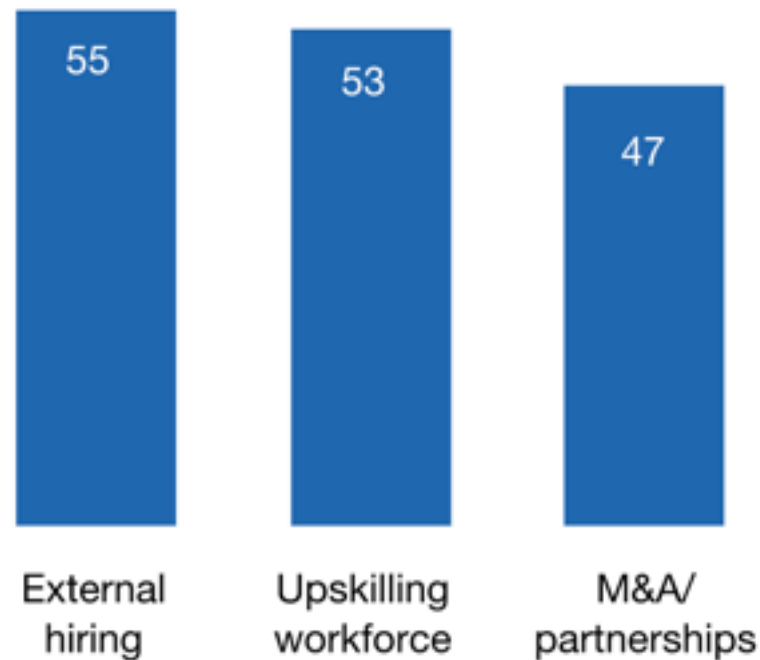
**PETITION FOR THE IMPOSITION OF
BEEF AND MEAT LABELING REQUIREMENTS: TO EXCLUDE PRODUCT
NOT DERIVED DIRECTLY FROM ANIMALS RAISED AND SLAUGHTERED
FROM THE DEFINITION OF "BEEF" AND "MEAT"**



How?

There is no silver bullet to close the workforce skill gap.

Question: How will you build critical new capabilities?,¹
% respondents

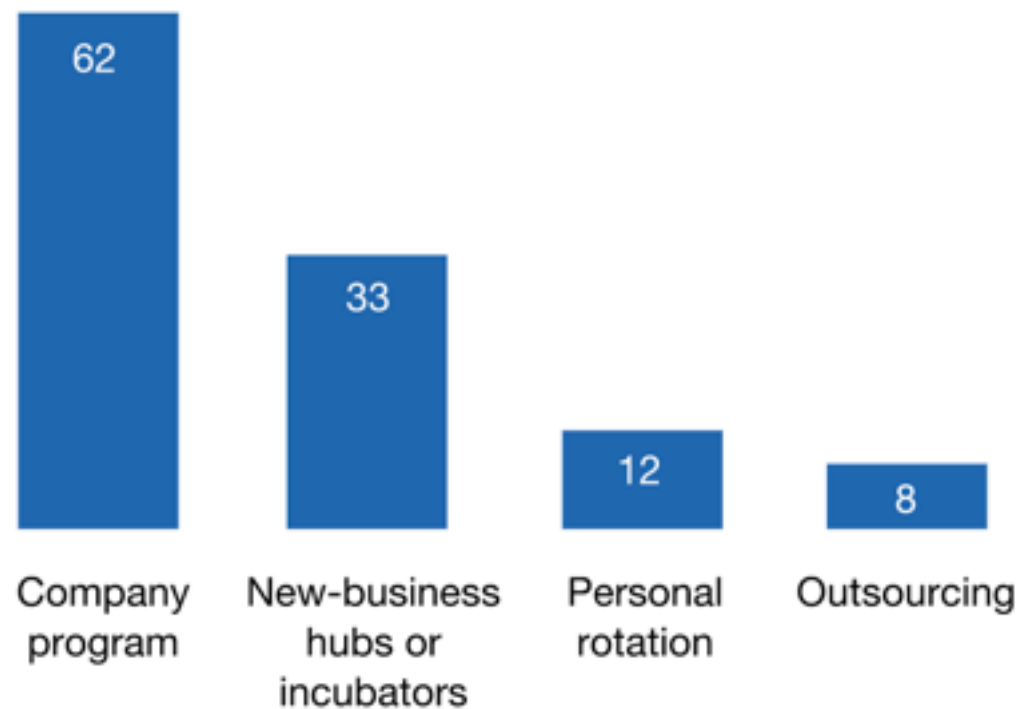


¹Multiple answers are possible.

Source: McKinsey Disruption Ahead survey, 2017–18

Many see a need for a company-wide approach to transformation.

Question: What is your approach to mastering the disruptions?,¹ % respondents



¹Multiple answers are possible.

Source: McKinsey Disruption Ahead survey, 2017–18

3 Challenges

1. Courage

2. Inclusive

3. Culture



Mobile



Social

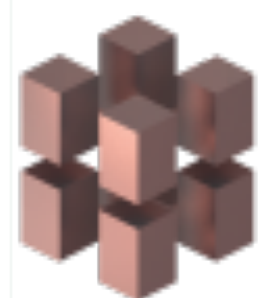


The Cloud



Big Data





FOAM



AI





Zack Bornstein ✓

@ZackBornstein



That face when you just wanted a faster way to rank girls by looks and ended up installing a fascist government in the most powerful country on earth



11/4/18, 5:18 am

64K Retweets **184K** Likes

8:29



From: **Anand Sanwal** >



To: <stephanie@broadaperture.c... > [Hide](#)

hello <first name>

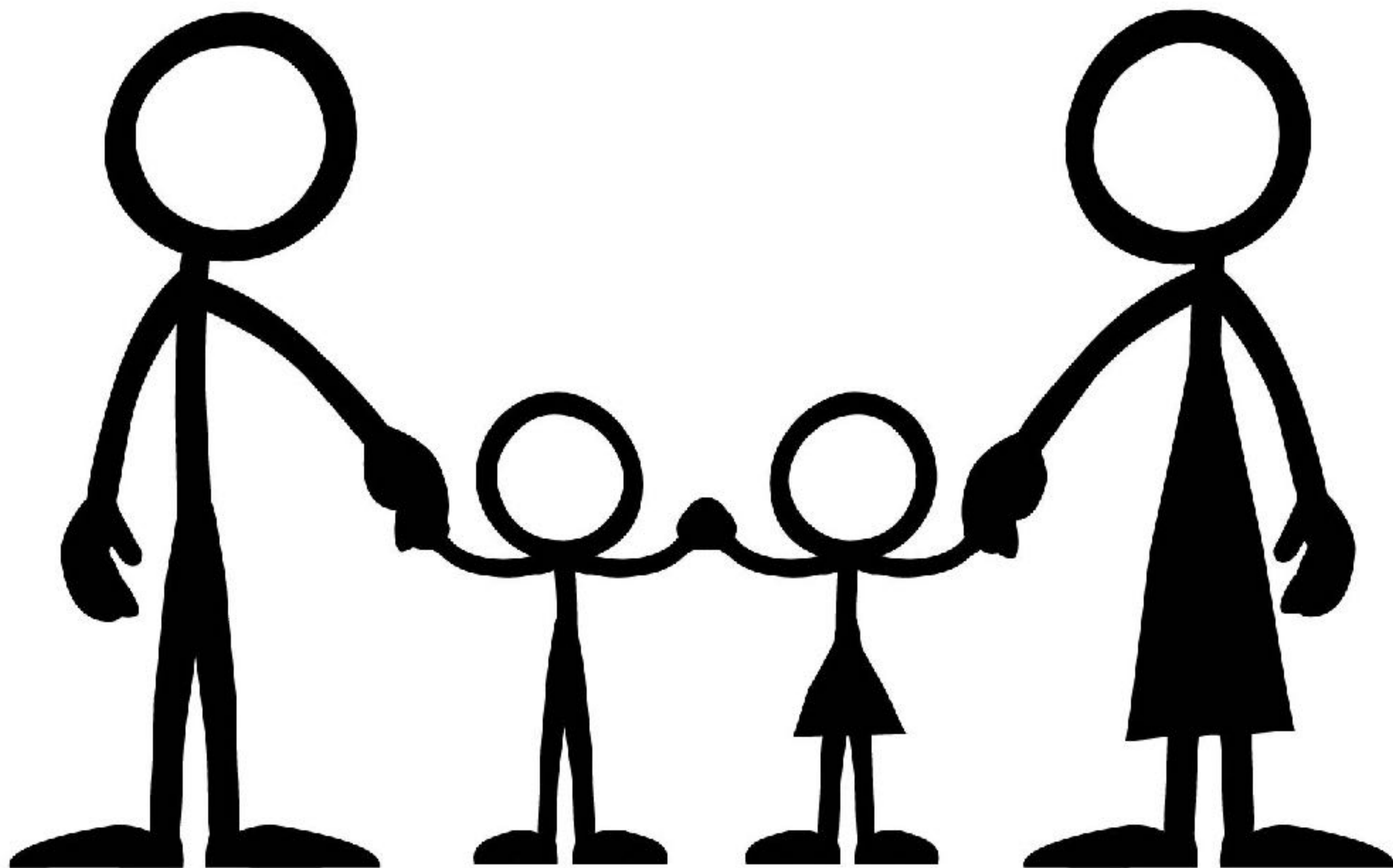
Today at 7:54 am

How VCs are investing globally. Blockchain for identity protection. Why startups fail.

[View this email in your browser](#)

[Subscribe to our newsletter](#)







#Digitaltransformation isn't a project you just put up once—it's part of your culture.


Satya Nadella


Getting Started


LEARNING


 Courses

 Learning Programs


 Learning Plans


 Certifications


 Catalogs


 Job Aids

MANAGE


 Users


 Skills


 Reports


 Announcements


CONFIGURE


 Gamification

 Badges

 Branding

 Email Templates

 Settings

 Billing

3 COURSE(S)

Social Licence
New South Wales, Australia

Published


NR

AUSTRALIAN
BEEF INDUSTRY

Animal welfare
Environment
Ethical treatment of animals
Food safety

Social License & Animal Welfare

Learning Program



2 COURSE(S)

Published

NR

Consumer Trends & Education

Learning Program



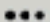
1 COURSE(S)

Published

NR

Security of Supply

Learning Program




1 COURSE(S)

Published

NR

Packaging & Meat Science

Learning Program




1 COURSE(S)

Published

NR

Regulatory Burden & Compliance

Learning Program



1 COURSE(S)

Published

NR

Energy

Learning Program



1 COURSE(S)

Published

NR



1 COURSE(S)

Published

NR



1 COURSE(S)

Published

NR

